



## Lines, tubes, and devices

Central venous lines

---

---

---

---

---

---

### What will I gain from this video?

After watching this video, you will know how to determine the correct placement of central venous catheters.

---

---

---

---

---

---

### Central venous catheters

- Monitor central venous pressure
- Administration of fluids, drugs
- Monitor pulmonary artery pressure

---

---

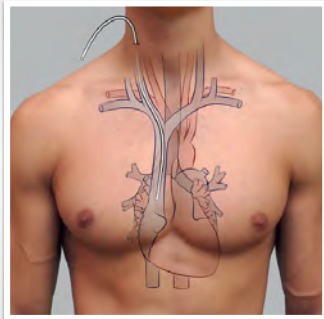
---

---

---

---

- Right internal jugular vein
- Right brachiocephalic vein
- SVC



---

---

---

---

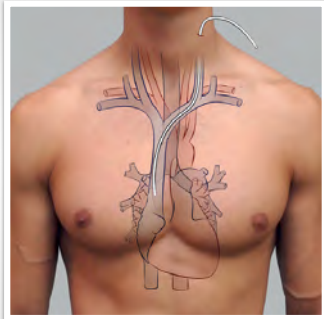
---

---

---

---

- Left internal jugular vein
- Left brachiocephalic vein
- SVC



---

---

---

---

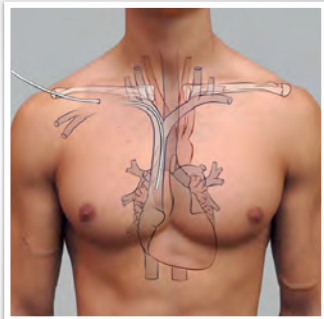
---

---

---

---

- Right subclavian vein
- Right brachiocephalic vein
- SVC



---

---

---

---

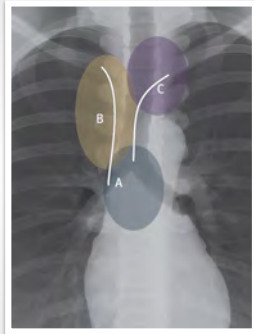
---

---

---

---

**Correct CVC position**



---

---

---

---

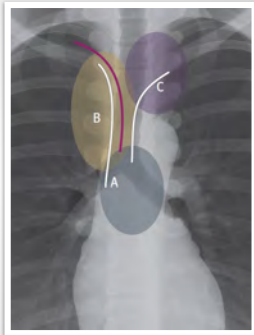
---

---

---

---

**Correct CVC position**



---

---

---

---

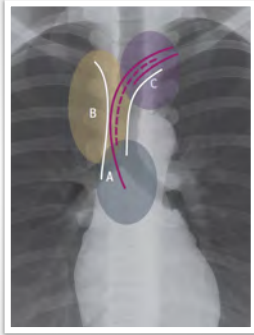
---

---

---

---

**Correct CVC position**



---

---

---

---

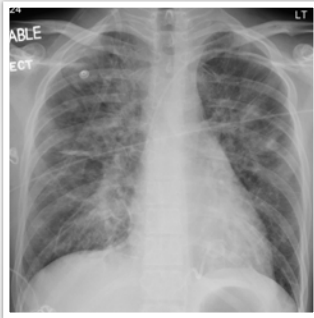
---

---

---

---

**Correct CVC position**



---

---

---

---

---

---

**Correct CVC position**



---

---

---

---

---

---

**Correct CVC position**



---

---

---

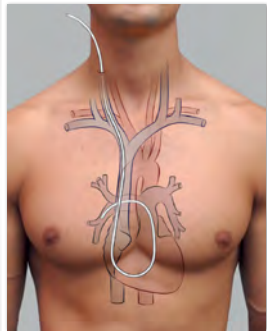
---

---

---

### Swan-Ganz insertion

- Right internal jugular vein
- Right brachiocephalic vein
- SVC
- Right atrium
- Right ventricle
- Pulmonary outflow tract
- Pulmonary artery



---

---

---

---

---

---

---

---

### Correct position



---

---

---

---

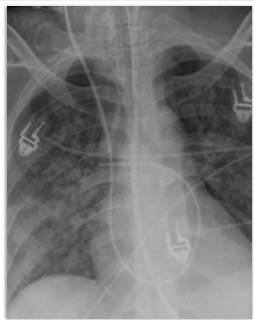
---

---

---

---

### Correct position



---

---

---

---

---

---

---

---

The carina is an important landmark.

The ideal position of CVC inserted from the right side is in Zone A, at or just below the carina.

The ideal position of CVC inserted from the left side is in Zone A, at or just below the carina, or Zone C within the left brachiocephalic vein.

The tip should always be away from the wall of the SVC.

The ideal position of a Swan-Ganz catheter is in a proximal branch of the pulmonary arteries.

---

---

---

---

---

---

---